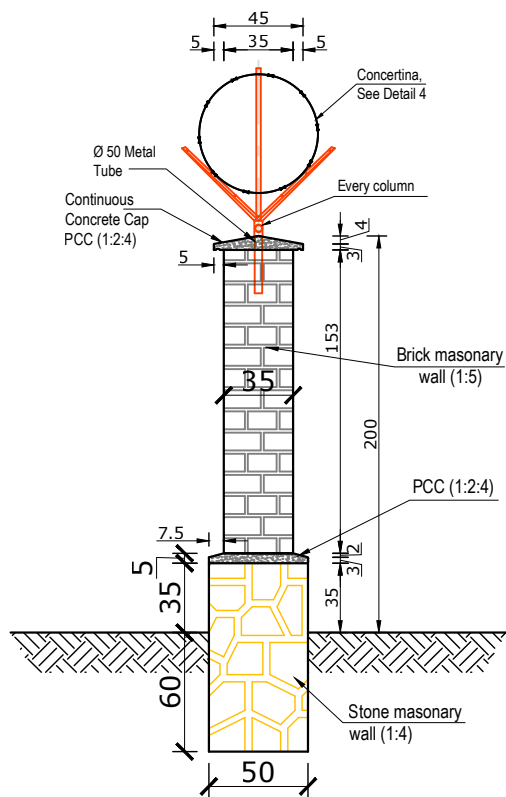
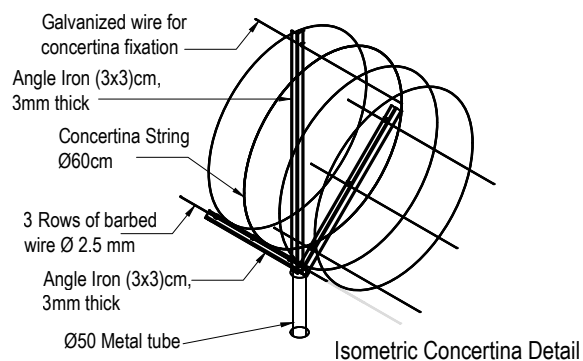
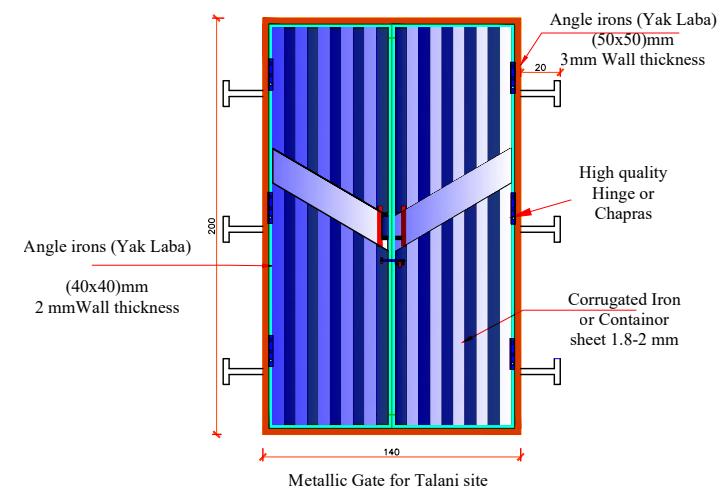
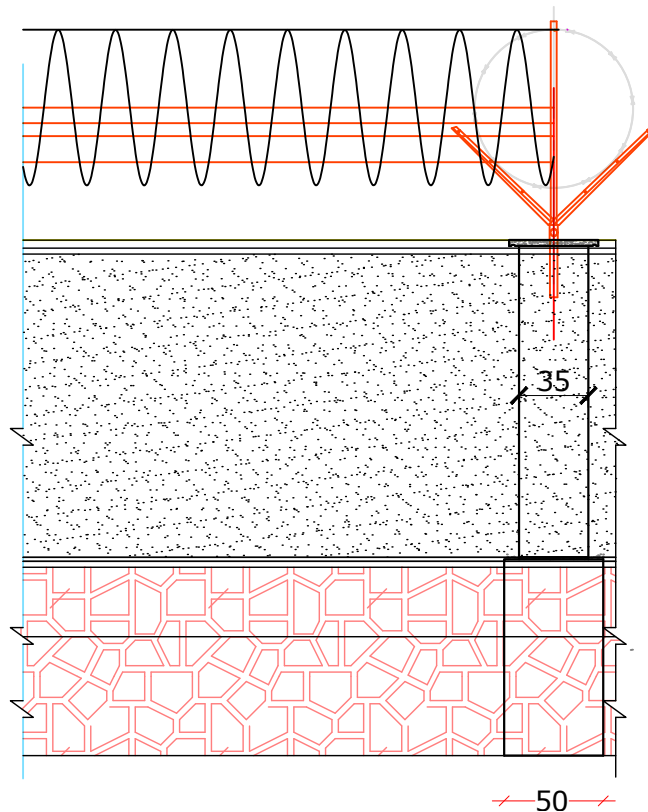


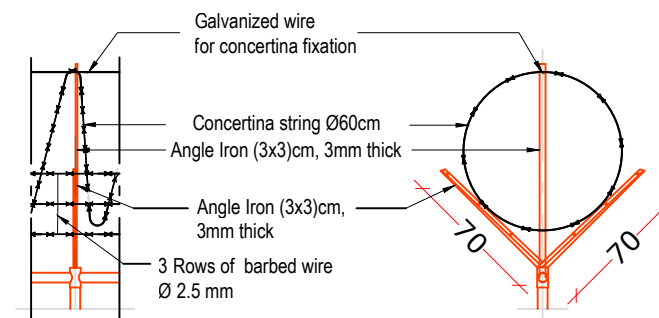
	SURVEYED BY	MEDAIR Engineering Dep	CHECKED BY		SCALE	1:XX		PROVINCE	Urozgan	PROJECT NAME	Water Supply System for Medair Health Facility (BHC) and Surrounding Community
	DESIGNED BY	MEDAIR Engineering Dep	REVIEWED BY		DATE	Sep-2025		DISTRICT	Chinarto	DRAWING TITLE	Solar Boundary wall plan
	DRAWN BY	Eng, Obaidullah Muneeb	APPROVED BY		DRAWING NO.	1		VILLAGE	Patan		

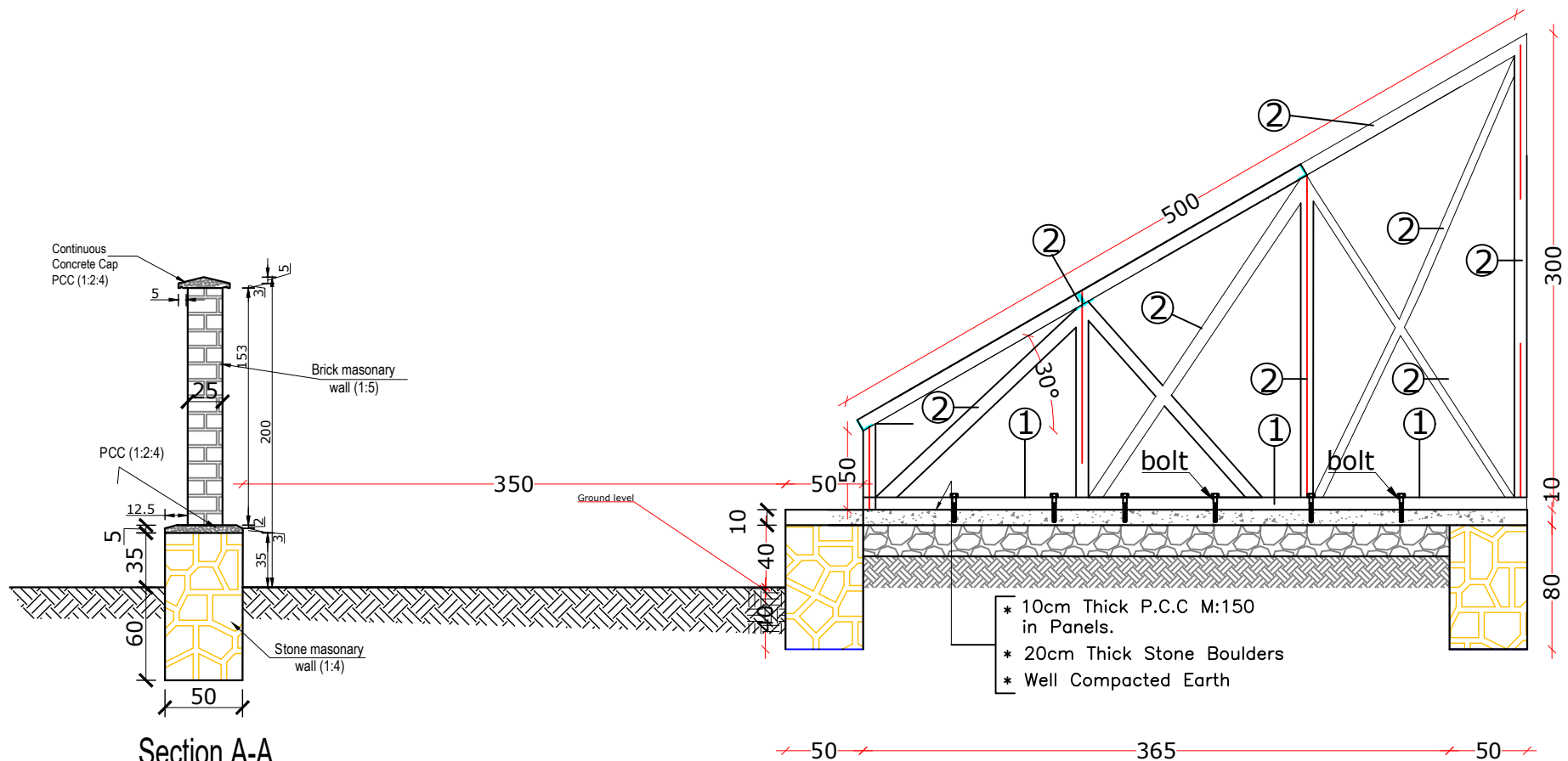


Section B-B



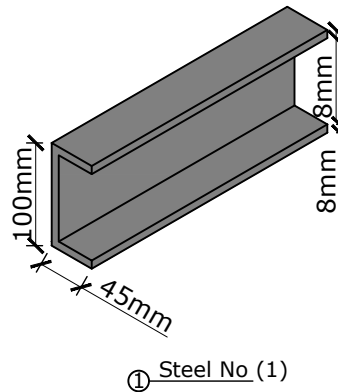
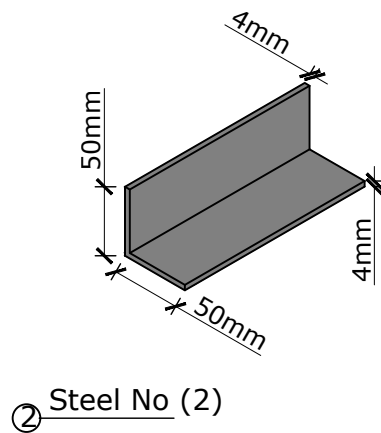
Isometric Concertina Detail





Section A-A

Section C-C



Note-1

1. Steel girder mini. sizing (100mm x 45mm x 8mm).
2. Steel angle iron (50mm x 50mm x 4mm).

Note2-

3. Length and width of solar panel stand should be adjusted according to dimension of solar panel on the site .